

3-Phase Motor Driver IC

ECN30632 Product Specification

Rev. 5

1. Product Description

1.1 Features

- (1) Maximum Ratings: 600VDC/3.0A, suitable for the system from 200VAC to 240VAC
- (2) PWM control of top and bottom arm IGBTs is possible with six control signals
- (3) Six IGBTs, six FWDs (Free-Wheeling Diodes), drivers for IGBTs, protection circuits, etc. integrated into a single chip, resulting in space reduction
- (4) Drives a motor using a high voltage DC power supply and a low voltage DC power supply (15V)

1.2 Functions

- (1) Prevention function against simultaneous ON of top and bottom arm IGBTs
- (2) Charge pump circuit (Built-in clock circuit and high voltage diodes)
- (3) Over-current protection (detects at 1.0V)
- (4) Over temperature protection
- (5) Fault function
- (6) Vcc low-voltage detection
- (7) 5V power supply circuit, 7.5V power supply circuit

1.3 Block Diagram

FIGURE 1.3.1 shows block diagram.

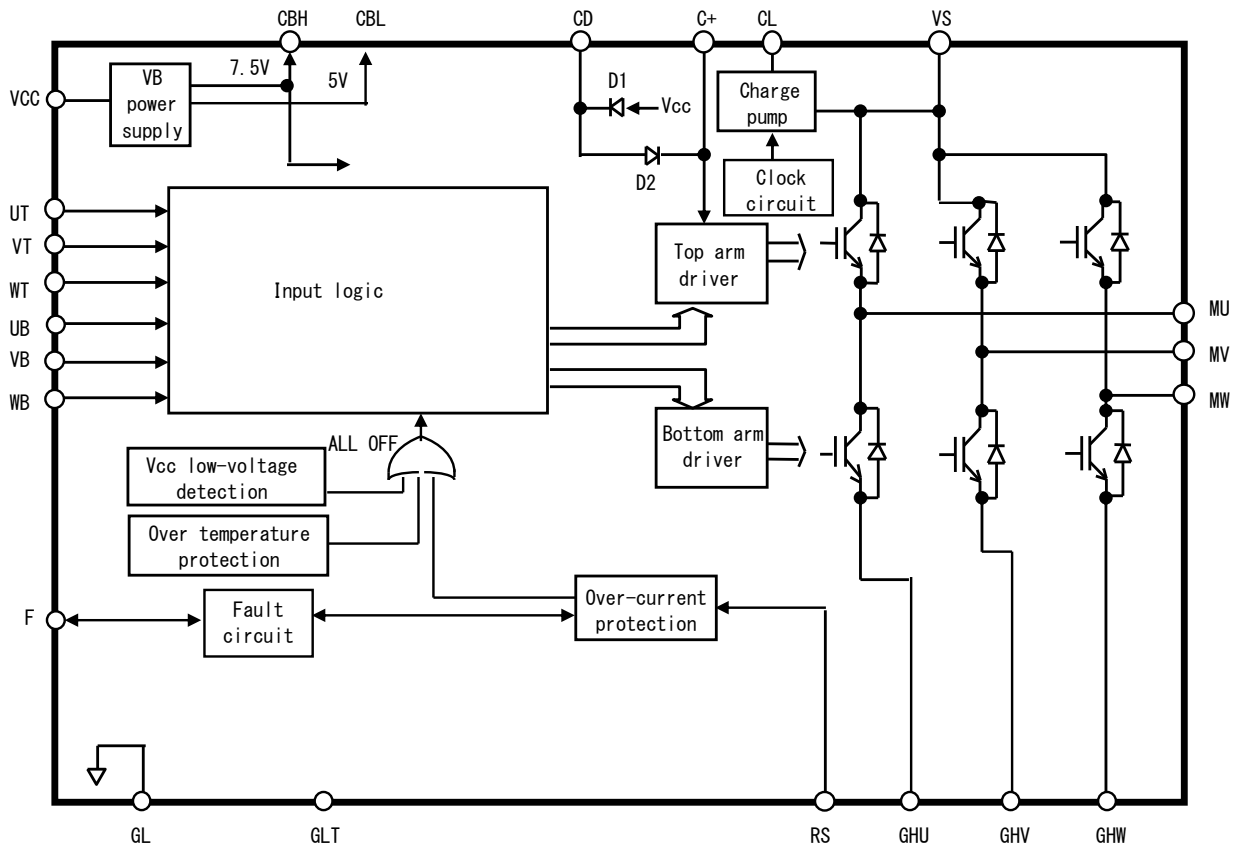


FIGURE 1.3.1 Block Diagram

1.4 Packages

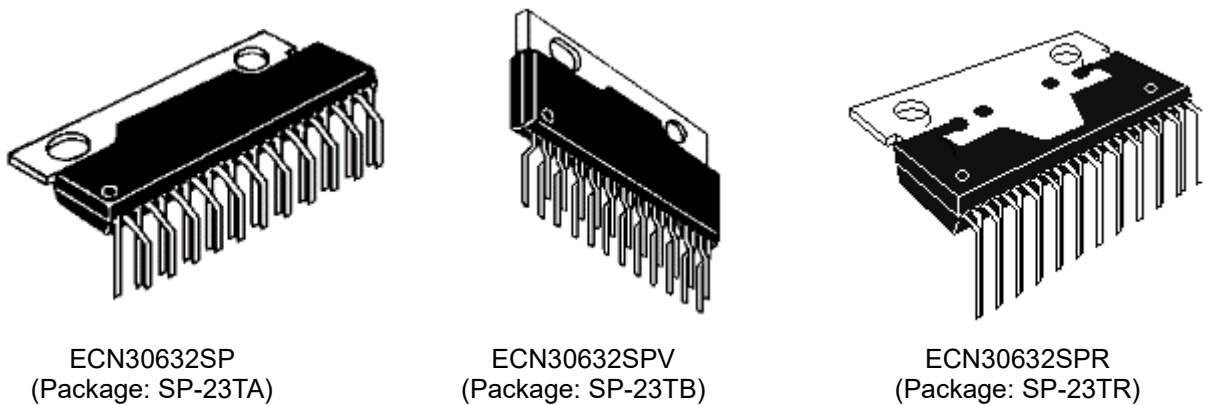


FIGURE 1.4.1 Packages of ECN30632

2. Specification

2.1 Maximum Ratings

TABLE 2.1.1 Maximum Ratings

Condition: Ta=25°C

No.	Item	Symbol	Pin	Rating	Unit	Condition
1	Output device withstand voltage	VSM	VS, CL, CD MU, MV, MW	600	V	
2	Vcc power supply voltage	VCC	VCC	18	V	
3	Voltage between C+ and VS	VCPM	C+, VS	18	V	
4	Input voltage 1	VIN1	UT, VT, WT, UB, VB, WB, RS	-0.5 to VBH+0.5	V	
5	Output current	Pulse	IP MU, MV, MW	3.0	A	Note 1
6		DC		IDC		
7	Fault output voltage	Vflt	F	-0.5 to Vcc+0.5	V	
8	VB supply output current	IBMAX	CBL, CBH	50	mA	Note 2
9	Junction operating temperature	Tjop	—	-40 to +135	°C	Note 3
10	Junction temperature	Tj	—	+150	°C	
11	Storage temperature	Tstg	—	-40 to +150	°C	

Note 1: Output IGBTs can handle this peak current.

Note 2: Total value of CBL and CBH.

Note 3: Thermal resistance

Between junction and case: Rjc = 4°C/W (Reference value)

2.2 Electrical Characteristics

TABLE 2.2.1 Electrical Characteristics Suffix (T: Top arm, B: Bottom arm) Condition: Ta=25°C

No.	Item	Symbol	Pin	Min.	Typ.	Max.	Unit	Condition	
1	Standby current	ISH	VS	—	0.1	0.4	mA	UT,VT,WT,UB,VB,WB=0V VS=325V, VCC=15V, IBL, IBH=0A	
2		ICC	VCC	—	5	10	mA		
3	IGBT collector-emitter saturation voltage	VONT	MU, MV,	—	2.0	3.0	V	I=0.7A, VCC=15V	
4		VONB	MW	—	2.0	3.0	V		
5	Free-wheeling diode forward voltage	VFDT	MU, MV,	—	1.6	2.8	V	I=0.7A	
6		VFDB	MW	—	1.6	2.8	V		
7	Output delay time	Turn ON	TdONT	MU,	—	0.7	1.1	μs	VS=325V, VCC=15V I=0.7A, Resistance load
8			TdONB	MV,	—	0.7	1.1	μs	
9		Turn OFF	TdOFFT	MW	—	0.7	1.1	μs	
10			TdOFFB		—	0.7	1.1	μs	
11	Minimum pulse width	TMINB	MU, MV, MW	0.5	—	—	μs	VCC=15V Note 1	
12	Over-current protection	Reference voltage	Vref2	RS, F	0.9	1.0	1.1	V	VCC=15V
13		Delay time	Tref2		—	1.7	3.0	μs	
14	RS input current	IILRS	RS	-100	—	—	μA	VCC=15V, RS=0V Note 2	
15	Over temperature protection	Operating temperature	TSDON	MU, MV,	135	160	185	°C	VCC=15V
16		Hysteresis	TSDHYS	MW	—	25	—	°C	
17	Vcc low-voltage detection	Operating voltage	LVSDON	VCC, MU, MV, MW	11.0	12.0	12.9	V	
18		Recovery voltage	LVSDOFF		11.1	12.5	13.0	V	
19	UT, VT, WT, UB, VB, WB, inputs	Voltage	VIH	UT,	3.0	—	—	V	VCC=15V
20			VIL	VT,	—	—	1.0	V	
21		Current	IIH	WT, UB,	—	—	100	μA	Input=5V VCC=15V
22			IIL	VB, WB	-10	—	—	μA	
23	VBL supply output	Voltage	VBL	CBL	4.5	5.0	5.5	V	VCC=15V, IBL=0A
24		Current	IBL		—	—	45	mA	VCC=15V Note 4
25	VBH supply output	Voltage	VBH	CBH	6.8	7.5	8.2	V	VCC=15V, IBH=0A
26		Current	IBH		—	—	45	mA	VCC=15V Note 4
27	Fault reset input time	Tflrs	F	—	15	30	μs	VCC=15V	
28	F output resistance	RONF	F	—	0.9	1.8	kΩ	Note 5	
29	Charge pump diode forward voltage	VFDCP	VCC, CD, C+	—	0.8	1.4	V	I=1mA	

Note 1: The minimum pulse width to be able to turn on and off top and bottom arms.

Note 2: Internal pull-up resistor is typically 200kΩ. The equivalent circuit is shown in FIGURE 2.2.1.

Note 3: Internal pull-down resistor is typically 200kΩ. The equivalent circuit is shown in FIGURE 2.2.2.

Note 4: The total value of IBL and IBH must be the IBMAX maximum rating or lower.

Note 5: The equivalent circuit is shown in FIGURE 2.2.3.

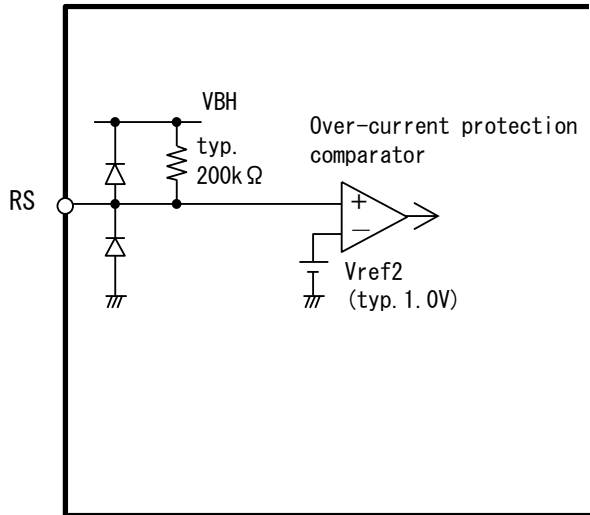


FIGURE 2.2.1 Equivalent Circuit around RS Pin

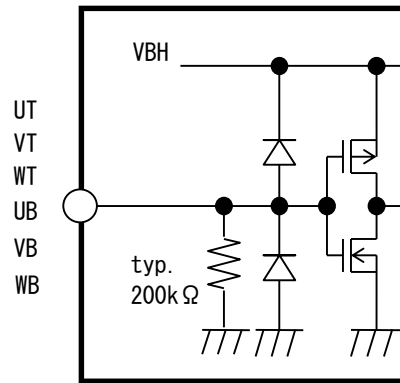


FIGURE 2.2.2 Equivalent Circuit around UT, VT, WT, UB, VB, WB Pins

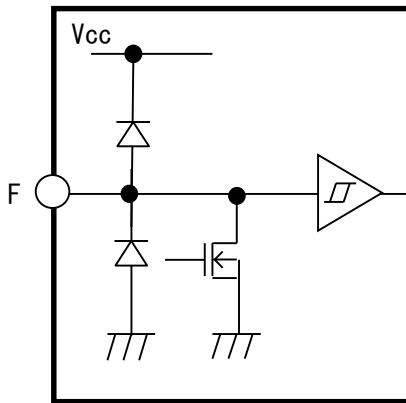


FIGURE 2.2.3 Equivalent Circuit around F Pin

2.3 Operating Condition

TABLE 2.3.1 Operating Condition

No.	Item	Symbol	Pin	Min.	Typ.	Max.	Unit	Condition
1	Supply voltage	VSop	VS	50	325	450	V	
2		VCCop	VCC	13.5	15.0	16.5	V	
3	GH voltage	Vgh	GHU, GHV, GHW	-1.2	—	1.2	V	Based on GL pin
4	Dead time	Tdt	UT, VT, WT, UB, VB, WB	1.0	—	—	μs	

2.4 Functions and Operations

2.4.1 Truth Table

TABLE 2.4.1.1 Truth Table

Input UT, VT, WT UB, VB, WB	IGBT operation
L	OFF
H Note 1	ON

Note 1: When the top input and bottom input in the same phase are “H” simultaneously, the top and bottom arm IGBTs in this phase are both off.

2.4.2 Over-current Protection

When the voltage at the RS pin exceeds the over-current protection reference voltage (V_{ref2} , typ. 1.0V), the F output is “L” and the top and bottom arm IGBTs are all turned off. To reset this all off state, hold the inputs all “L” for more than the Fault reset input time (T_{flrs}).

When this function is not used, connect the F pin to the VCC pin.

FIGURE 2.4.2.1 shows the timing chart of the over-current protection operation.

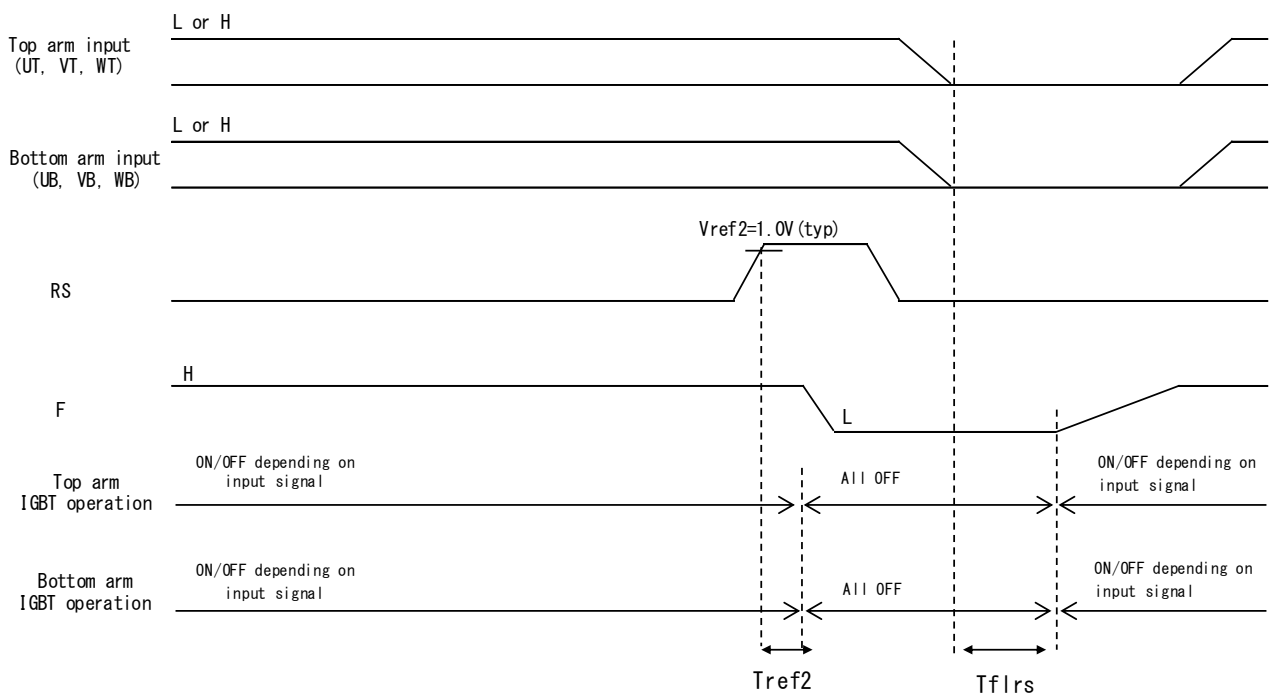


FIGURE 2.4.2.1 Timing Chart for Over-current Protection Operation

2.4.3 Vcc Low-voltage Detection

When the Vcc voltage drops below the operating voltage of the Vcc low-voltage detection (LVSDON), all IGBTs (top and bottom arms) are turned off. When the Vcc voltage goes up above the recovery voltage of the Vcc low-voltage detection (LVSDOFF), the IC returns to the state in which the IGBTs operate depending on input signals. "L" is not outputted to the F pin in this function operation.

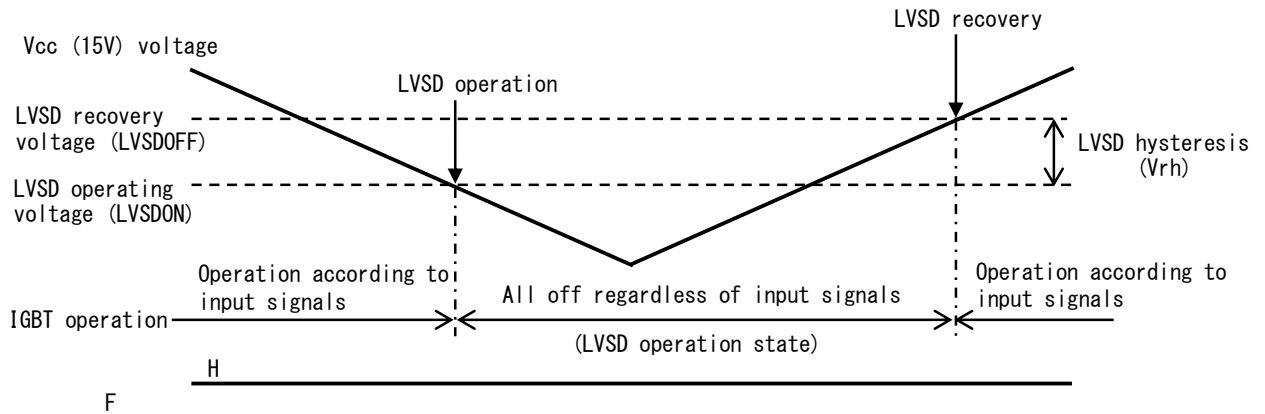


FIGURE 2.4.3.1 Timing Chart for Vcc Low-voltage Detection (LVSD Operation)

2.4.4 Over Temperature Protection

When the IC temperature exceeds the operating temperature of over temperature protection (TSDON), all IGBTs (top and bottom arms) are turned off. When the IC temperature goes down the hysteresis (TSDHYS) from the operating temperature of over temperature protection (TSDON), the IC returns to the state in which the IGBTs operate depending on input signals. "L" is not outputted to the F pin in this function operation.

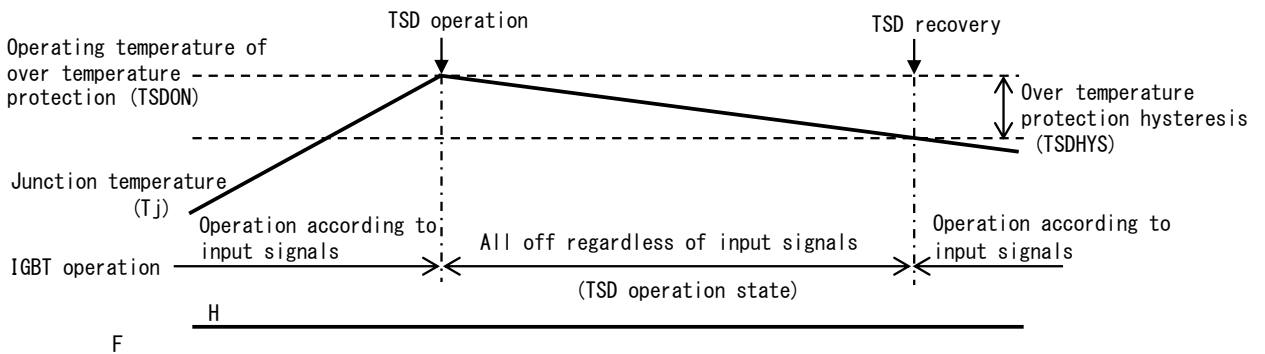


FIGURE 2.4.4.1 Timing Chart for Over Temperature Protection Operation

3. Standard Applications

3.1 External Components

TABLE 3.1.1 External Components

Component	Standard value	Usage	Remark
CH0, CL0	1.0 μ F \pm 10%, 25V	Smooths the internal power supply (VB)	
CV1	1 μ F \pm 10%, 25V	Smooths the Vcc power supply	Note 1
CV2	33nF \pm 10%, 630V	Smooths the Vs power supply	Note 1
C1, C2	0.22 μ F \pm 10%, 25V	For charge pump	Note 2
Rs	1 Ω \pm 1%, 1W	Sets over-current protection	Note 3 for how to set Rs.
CF	0.01 μ F \pm 10%, 25V	Eliminates output noise of Fault signal	
RF	10k Ω \pm 10%	For pull up	

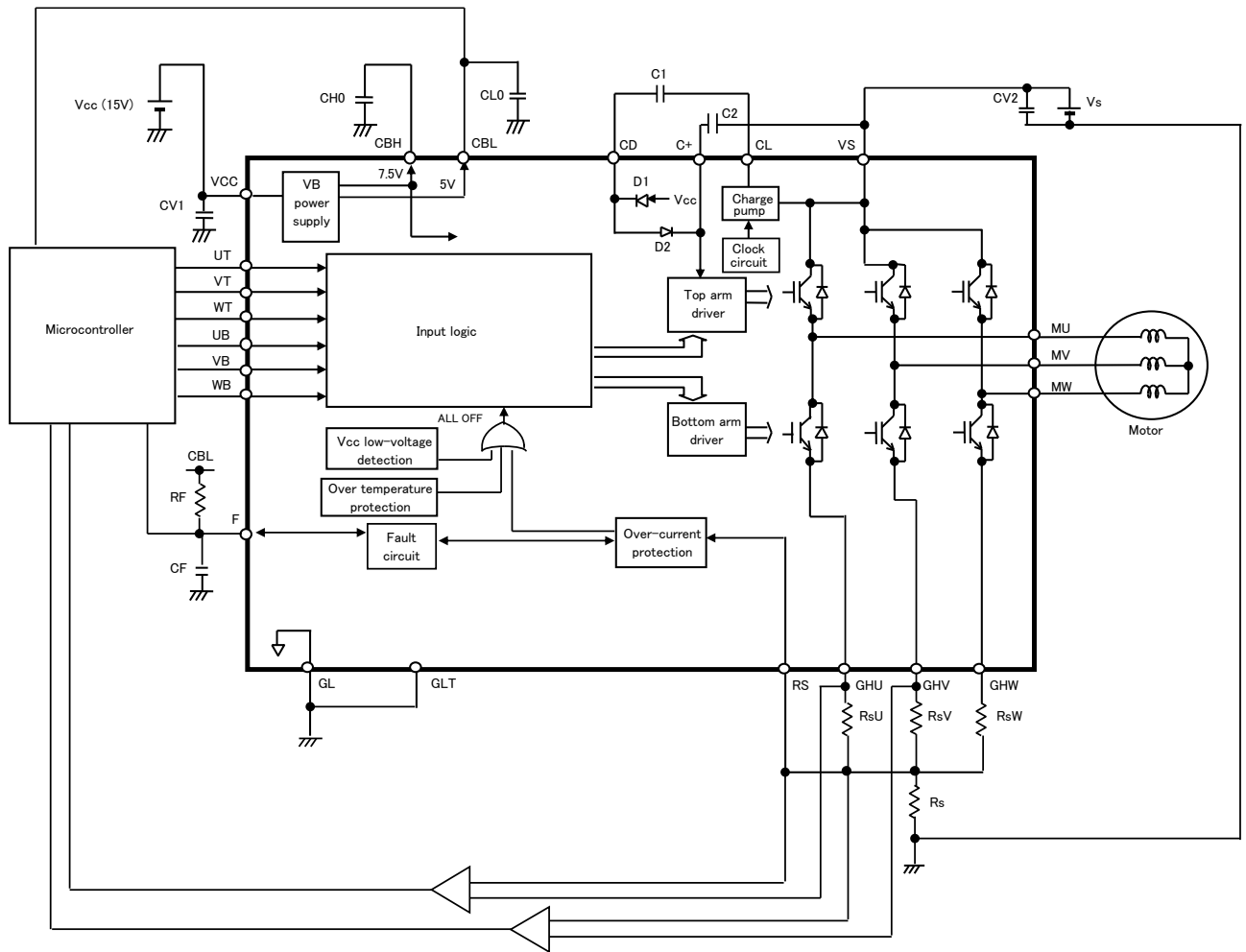


FIGURE 3.1.1 Block Diagram (ECN30632 is shown inside the bold line.)

Note 1. Caution for smoothing capacitor

As necessary, increase the capacitance and add a zener diode in consideration of noise immunity.

Note 2. Attention of component settings of charge pump circuit

When capacity of a capacitor is small, the voltage between the C+ pin and the VS pin drops because of the internal dissipation current from the C+ pin of the IC.

When the voltage between the C+ pin and the VS pin drops, the gate voltage of the top arm IGBTs also drops. The drop of the gate voltage could cause a rise of Tj because of ON-resistance increase of the top arm IGBTs and could cause a decrease in saturation current of the top arm IGBTs. That could lead to degradation or destruction of the IC. Caution is therefore needed when deciding capacity of a capacitor.

The voltage impressed to the capacitor is almost the same as Vcc in operation. Therefore, the withstand voltage of the capacitor requires more than the Vcc voltage. Pay close attention when using components other than those shown in TABLE 3.1.1.

Note 3. Caution for Rs resistance setting

The over-current protection set value (IO_2) can be calculated as follows.

$$IO_2 = Vref2 / Rs$$

Vref2: Over current protection reference voltage

Rs : Shunt resistance value

Delay time to turn output IGBT off (Tref2) and variability of Vref2, Rs need to be considered. Observe the output currents of the IC (the coil currents of the motor) and confirm a design margin.

When shunt resistance value is set, GHU, GHV, and GHW voltages are not allowed to exceed the range of GH voltage (Vgh).

3.2 Input Pins (UT, VT, WT, UB, VB, WB)

In some applications, input pins may be sensitive to noise due to high impedance. If noise is detected at an input pin, the following resistor and/or capacitor should be added.

- Resistor : 5.6kΩ ± 5% pull-down resistor between the GL pin and input pins
- Capacitor : 470pF ± 20% ceramic capacitor close to the input pin

4. Safe Operation Area (SOA) and Derating

4.1 Safe Operation Area (SOA)

The current and voltage at output pins must not be outside the SOA shown in FIGURE 4.1.1.

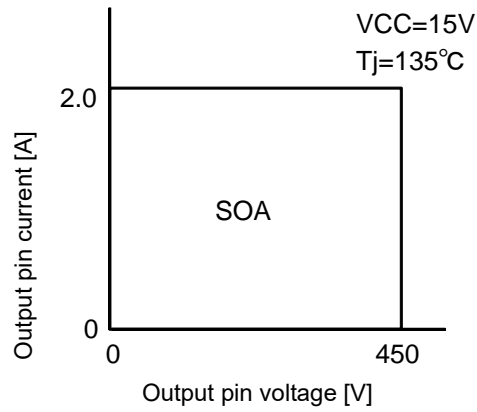


FIGURE 4.1.1 SOA

4.2 Shunt Resistor (Rs) Setting

Delay time to turn output IGBT off (T_{ref2}) and variability of V_{ref2} , R_s need to be considered, and the current must be below the derating curve of FIGURE 4.1.1.

4.3 General Design Derating Standards

- (a) Temperature - Junction operating temperature must be kept under 110°C.
- (b) Supply voltage - V_s power supply voltage must be kept under 450V.

Junction operating temperature depends on various parameters such as power supply voltages, ambient temperature, load, heat dissipation routes. Test it sufficiently by using actual systems.

5. Pin Locations

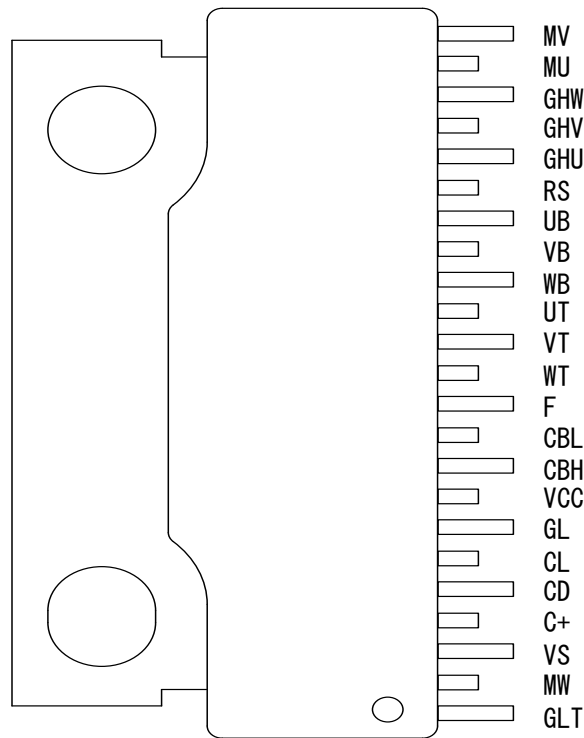


FIGURE 5.1 Pin Locations

6. Explanations of Pins

TABLE 6.1 Explanations of Pins

Pin No.	Symbol	Explanation	Remark
1	GLT	To be set to ground potential	Note 2, Note 3
2	MW	W-phase output	Note 1
3	VS	High voltage power supply	Note 1
4	C+	For the charge pump circuit	Note 1
5	CD	For the charge pump circuit	Note 1
6	CL	For the charge pump circuit	Note 1
7	GL	Ground	Note 2
8	VCC	15V power supply	
9	CBH	VBH power supply output (7.5V)	
10	CBL	VBL power supply output (5V)	
11	F	Fault signal output	
12	WT	Input control signal for W-phase top arm	
13	VT	Input control signal for V-phase top arm	
14	UT	Input control signal for U-phase top arm	
15	WB	Input control signal for W-phase bottom arm	
16	VB	Input control signal for V-phase bottom arm	
17	UB	Input control signal for U-phase bottom arm	
18	RS	Input for over-current protection	
19	GHU	Emitter of U-phase bottom arm IGBT and anode of U-phase bottom arm FWD	
20	GHV	Emitter of V-phase bottom arm IGBT and anode of V-phase bottom arm FWD	
21	GHW	Emitter of W-phase bottom arm IGBT and anode of W-phase bottom arm FWD	
22	MU	U phase output	Note 1
23	MV	V phase output	Note 1

Note 1: High voltage pin. The voltage between CD and CL and the voltage between C+ and VS are low.

Note 2: Connect GLT to GL externally.

Note 3: The potential of tab (IC heat sink) is the same as that of the GLT pin. Set the tab potential to open or the same as that of GL pin.

7. Inspection

Hundred percent inspection shall be conducted on electric characteristics at room temperature. For the operating temperature and hysteresis of the over temperature protection, equivalent inspections are conducted at room temperature.

8. Precautions for Use

8.1 Attachment

To attach a heat sink to the IC, tightening torque should be 0.39 to 0.78 N·m. Tab should not be soldered.

8.2 Countermeasures against Electrostatic Discharge (ESD)

- (a) Customers need to take precautions to protect ICs from electrostatic discharge (ESD). The material of the container or any other device used to carry ICs should be free from ESD, which can be caused by vibration during transportation. Use of electrically conductive containers is recommended as an effective countermeasure.
- (b) Everything that touches ICs, such as the work platform, machine, measuring equipment, and test equipment, should be grounded.
- (c) Workers should be high-impedance grounded (100kΩ to 1MΩ) while working with ICs, to avoid damaging the ICs by ESD.
- (d) Friction with other materials, such as high polymers, should be avoided.
- (e) When carrying a PCB with a mounted IC, ensure that the electric potential is maintained at a constant level using the short-circuit terminals and that there is no vibration or friction.
- (f) The humidity at an assembly line where ICs are mounted on circuit boards should be kept around 45 to 75 percent using humidifiers or such. If the humidity cannot be controlled effectively, using ionized air blowers (ionizers) is effective.

8.3 High Voltage Pin Insulation

Apply resin coating to the pins that high voltage is impressed to or encapsulate the PCB by resin molding.

8.4 Output Short-circuit Protection

Our IC could break by a short circuit (ex. load short). Therefore, external protection is needed.

8.5 Maximum Ratings

Regardless of changes in external conditions during use of our IC, the “maximum ratings” described in this document should never be exceeded when designing electronic circuits that employ our IC. If maximum ratings are exceeded, our IC may be damaged or destroyed. In no event shall our company be liable for any failure in our IC or any secondary damage resulting from use at a value exceeding the maximum ratings.

8.6 Derating Design

Continuous high-load operation (high temperatures, high voltages, large currents) should be avoided and derating design should be applied, even within the ranges of the maximum ratings, to ensure reliability.

8.7 Safe Design

Our IC may fail due to accidents or unexpected surge voltages. Accordingly, adopt safe design features, such as redundancy and measures to prevent misuse, in order to avoid extensive damage in the event of a failure.

8.8 Application

If our IC is applied to the following uses where high reliability is required, obtain the document of permission from our company in advance.

- Automobile, Train, Vessel, etc.

Do not apply our IC to the following uses where extremely high reliability is required.

- Nuclear power control system, Aerospace instrument, Life-support-related medical equipment, etc.

8.9 Soldering

The peak temperature of flow soldering* must be less than 260°C, and the dip time must be less than 10 seconds.

High stress by mounting, such as long time thermal stress by preheating, mechanical stress, etc., can lead to degradation or destruction. Make sure that your mounting method does not cause problem as a system.

* Flow soldering: Only pins enter a solder bath, while the resin or tab does not.

8.10 Others

See “Instructions for Use of High-Voltage Monolithic ICs” and “Application Note” for other precautions and instructions on how to deal with these kinds of products.

9. Usage

- (1) Our company warrants that our products have the specified performance according to the respective specifications at the time of its sale. Testing and other quality control techniques of our products by our company are utilized to the extent we need to meet the specifications described in this document. Not every device of our products is specifically tested on all parameters, except those mandated by relevant laws and/or regulations.
- (2) Following any claim regarding the failure of a product to meet the performance described in this document made within one month of product delivery, all the products in relevant lot(s) shall be re-tested and re-delivered. Our products delivered more than one month before such a claim shall not be counted for such response.
- (3) Our company assumes no obligation nor makes any promise of compensation for any fault which should be found in a customer's goods incorporating the products in the market. If a product failure occurs for reasons obviously attributable to our company and a claim is made within six months of product delivery, our company shall offer free replacement or payment of compensation. The maximum compensation shall be the amount paid for the products, and our company shall not assume responsibility for any other compensation.
- (4) Our company reserves the right to make changes in this document and to discontinue mass production of the relevant products without notice. Customers are advised to confirm specification of the product of inquiry before purchasing of the products that the customer desired. Customers are further advised to confirm before purchasing of such above products that the product of inquiry is the latest version and that the relevant product is in mass production status if the purchasing of the products by the customer is suspended for one year or more.
- (5) When you dispose of our products and/or packing materials, comply with the laws and regulations of each country and/or local government. Conduct careful preliminary studies about environmental laws applying to your products such as RoHS, REACH. Our company shall not assume responsibility for compensation due to contravention of laws and/or regulations.

- (6) Our company shall not be held liable in any way for damages and infringement of patent rights, copyright or other intellectual property rights arising from or related to the use of the information, products, and circuits in this document.
- (7) No license is granted by this document of any patents, copyright or other intellectual property rights of any third party or of our company.
- (8) This document may not be reprinted, reproduced or duplicated, in any form, in whole or in part without the express written permission of our company.
- (9) You shall not use our products (technologies) described in this document and any other products (technologies) manufactured or developed by using them (hereinafter called "END Products") or supply our products (technologies) and END Products for the purpose of disturbing international peace and safety, including (i) the design, development, production, stockpiling or any use of weapons of mass destruction such as nuclear, chemical or biological weapons or missiles, (ii) the other military activities, or (iii) any use supporting these activities. You shall not sell, export, dispose of, license, rent, transfer, disclose or otherwise provide our products (technologies) and END Products to any third party whether directly or indirectly with knowledge or reason to know that the third party or any other party will engage in the activities described above.

When exporting, re-export transshipping or otherwise transferring our products (technologies) and END Products, all necessary procedures are to be taken in accordance with Foreign Exchange and Foreign Trade Act (Foreign Exchange Act) of Japan, Export Administration Regulations (EAR) of US, and any other applicable export control laws and regulations promulgated and administered by the governments of the countries asserting jurisdictions over the parties or transaction.

◆ Appendix - Supplementary Data

1. Dimensions

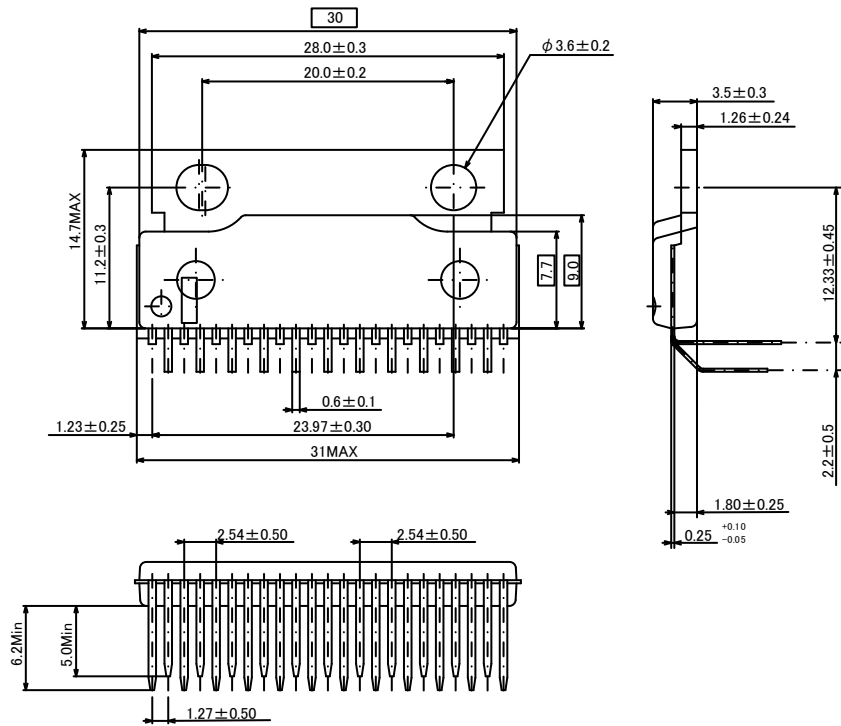


FIGURE A: Dimensions of SP

Unit: mm

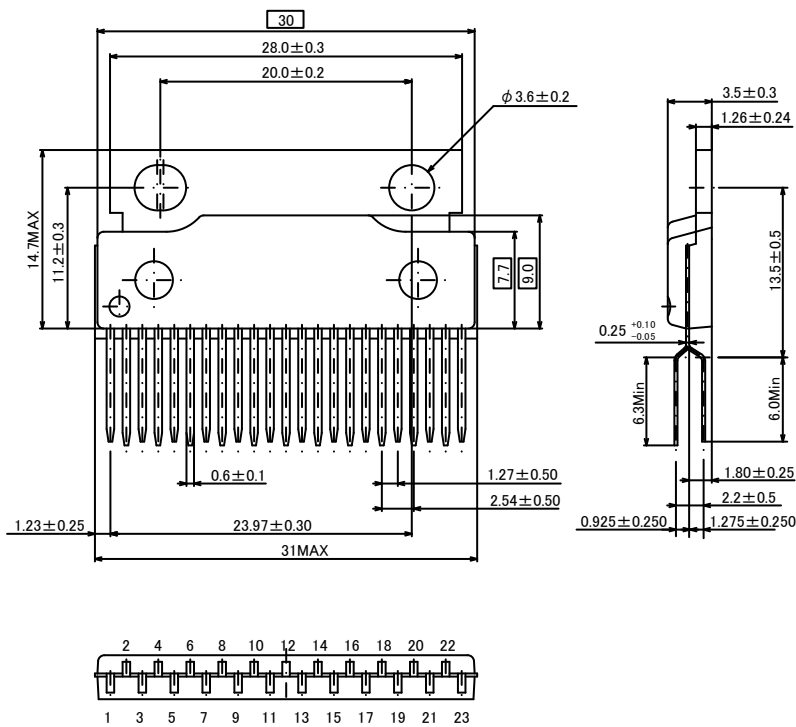


FIGURE B: Dimensions of SPV

Unit: mm

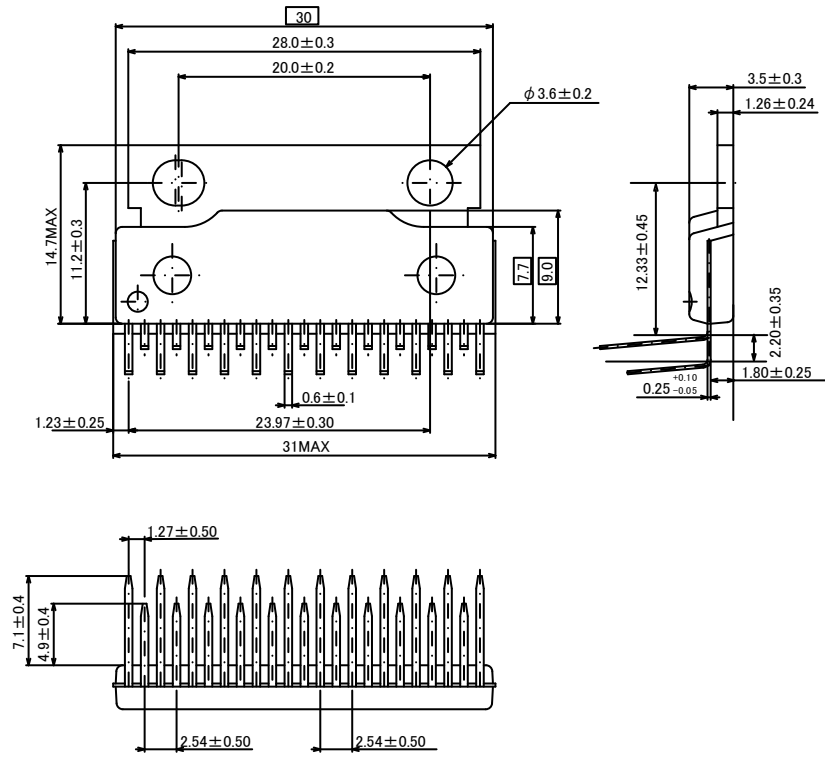


FIGURE C: Dimensions of SPR

Unit: mm

2. External Packaging

FIGURE D shows the external packaging.

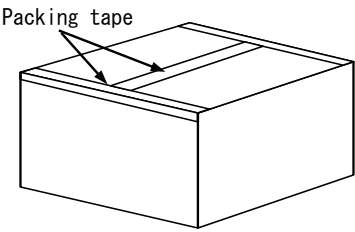
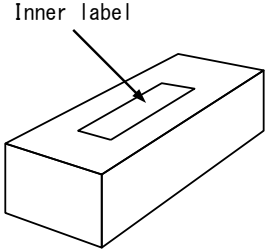
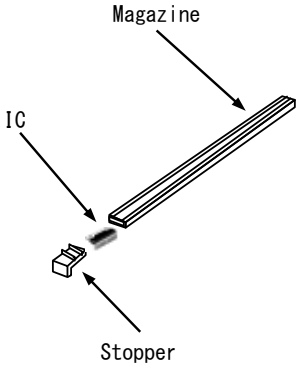
Inverter IC	
Outer box	 <p>A 3D perspective drawing of a rectangular box. Two arrows point to the top surface of the box, labeled "Packing tape".</p>
Inner box	 <p>A 3D perspective drawing of a rectangular box. An arrow points to a rectangular label on the top surface, labeled "Inner label".</p>
Magazine	 <p>A 3D perspective drawing showing a magazine (a long, thin, multi-layered strip) with an IC (integrated circuit) and a stopper. Arrows point to the "Magazine", "IC", and "Stopper".</p> <p>The number of ICs: 15 pcs/magazine</p>

FIGURE D: External Packaging

Precautions for Safe Use and Notices

If semiconductor devices are handled in an inappropriate manner, failures may result. For this reason, be sure to read the latest version of "Instructions for Use of High-Voltage Monolithic ICs" before use.



This mark indicates an item requiring caution.



CAUTION This mark indicates a potentially hazardous situation which, if not avoided, may result in minor or moderate injury and damage to property.



CAUTION

- (1) Regardless of changes in external conditions during use of semiconductor devices, the "maximum ratings" and "safe operating area(SOA)" should never be exceeded when designing electronic circuits that employ semiconductor devices.
- (2) Semiconductor devices may fail due to accidents or unexpected surge voltages. Accordingly, adopt safe design features, such as redundancy and measures to prevent misuse, in order to avoid extensive damage in the event of a failure.
- (3) If semiconductor devices are applied to uses where high reliability is required, obtain the document of permission from MPSD in advance (Automobile, Train, Vessel, etc.). Do not apply semiconductor devices to uses where extremely high reliability is required (Nuclear power control system, Aerospace instrument, Life-support-related medical equipment, etc.).
(If a semiconductor device fails, there may be cases in which the semiconductor device, wiring or wiring pattern will emit smoke or cause a fire or in which the semiconductor device will burst.)

NOTICES

1. This Data Sheet contains the specifications, characteristics, etc. concerning power semiconductor products (hereinafter called "products").
2. All information included in this document such as product data, diagrams, charts, algorithms, and application circuit examples, is current as of the date this document is issued. Such information, specifications of products, etc. are subject to change without prior notice. Before purchasing or using any of the MPSD products listed in this document, please confirm the latest product information with a MPSD sales office.
3. MPSD shall not be held liable in any way for damages and infringement of patent rights, copyright or other intellectual property rights arising from or related to the use of the information, products, and circuits in this document.
4. No license is granted by this document of any patents, copyright or other intellectual property rights of any third party or of MPSD.
5. This document may not be reprinted, reproduced or duplicated, in any form, in whole or in part without the express written permission of MPSD.
6. You shall not use the MPSD products (technologies) described in this document and any other products (technologies) manufactured or developed by using them (hereinafter called "END Products") or supply the MPSD products (technologies) and END Products for the purpose of disturbing international peace and safety, including (i) the design, development, production, stockpiling or any use of weapons of mass destruction such as nuclear, chemical or biological weapons or missiles, (ii) the other military activities, or (iii) any use supporting these activities. You shall not sell, export, dispose of, license, rent, transfer, disclose or otherwise provide the MPSD products (technologies) and END Products to any third party whether directly or indirectly with knowledge or reason to know that the third party or any other party will engage in the activities described above.
When exporting, re-export transshipping or otherwise transferring the MPSD products (technologies) and END Products, all necessary procedures are to be taken in accordance with Foreign Exchange and Foreign Trade Act (Foreign Exchange Act) of Japan, Export Administration Regulations (EAR) of US, and any other applicable export control laws and regulations promulgated and administered by the governments of the countries asserting jurisdictions over the parties or transaction.
7. In no event shall MPSD be liable for any failure in MPSD products or any secondary damage resulting from use at a value exceeding the maximum ratings.

Refer to the following website for the latest information. Contact a MPSD sales office if you have any questions.

<https://www.minebea-psd.com/en>